



How-To Guide

RemoteFX Support For Topaz Signature Pads

Copyright © Topaz Systems Inc. All rights reserved.

For Topaz Systems, Inc. trademarks and patents, visit www.topazsystems.com/legal.

Table of Contents

Overview.....	3
Server Side Set-Up	3
Client Side Set-Up	3
1. <i>Enable USB Redirect.....</i>	<i>3</i>
2. <i>Connect to RemoteFX Server.....</i>	<i>4</i>
Sign with the Test Program – Topaz DemoOCX	7

Overview

Microsoft Remote Desktop Services provides USB redirection functionality in Windows 2008 SP1, Windows 2012, and subsequent operating systems. On the client side, Windows 7 Pro SP1, Windows 8 Pro, and Windows 8 Enterprise versions are equipped with the RemoteFX feature.

Topaz Virtual Serial via USB devices (-BSB-R and -BBSB-R pads) are compatible with the RemoteFX protocol.

Server Side Set-Up

On the server side, the Topaz “SigPlus BSB” (with “DemoOCX” in the download) should be installed (download at: www.topazsystems.com/bsbpadinstall.html), along with your applications, on the core image, so that all the cloned VDIs (Virtual Desktop Images) have them as well.

Note that “DemoOCX” is included in the “SigPlus Pro ActiveX” install (see the “Sign with the Test Program – Topaz DemoOCX” section for more information). On the client side, see the section below called “Client Side Set-Up”.

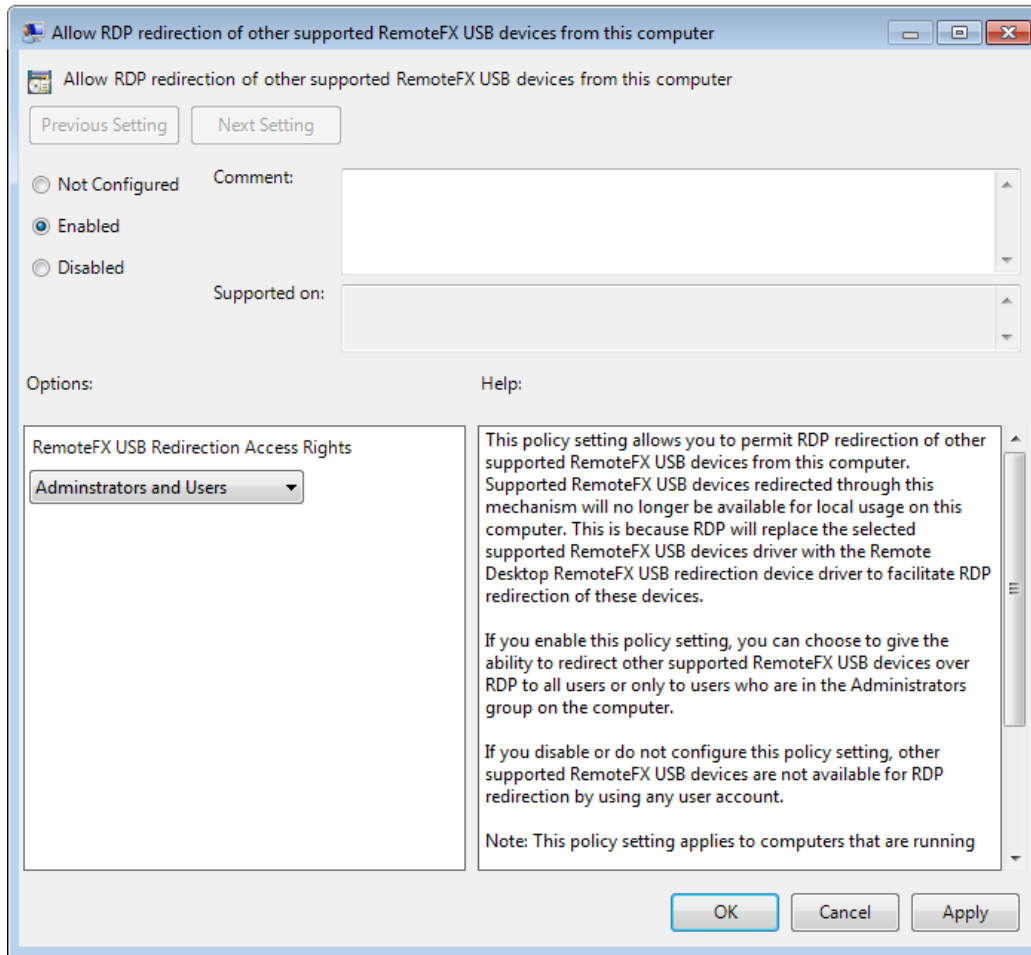
Client Side Set-Up

1. Enable USB Redirect

First, set the RDP redirect policy using the “Local Group Policy Editor”. In Windows 7 Pro and Windows 8.1 Pro/Enterprise, open the “Command Prompt”, type “gpedit” (without the quotation marks), and press “Enter”.

Once the “Local Group Policy” dialog is displayed, go to “Computer Configuration” → “Administrative Templates” → “Windows Components” → “Remote Desktop Services” → “Remote Desktop Connection Client” → “RemoteFX USB Device Redirection”. Double-click on “*Allow RDP redirection of other supported RemoteFX USB devices from this computer*”.

This opens a window to change the policy settings. Select the “Enabled” radio button. Under “Options”, set the “RemoteFX USB Redirection Access Rights” to “Administrators and Users”.

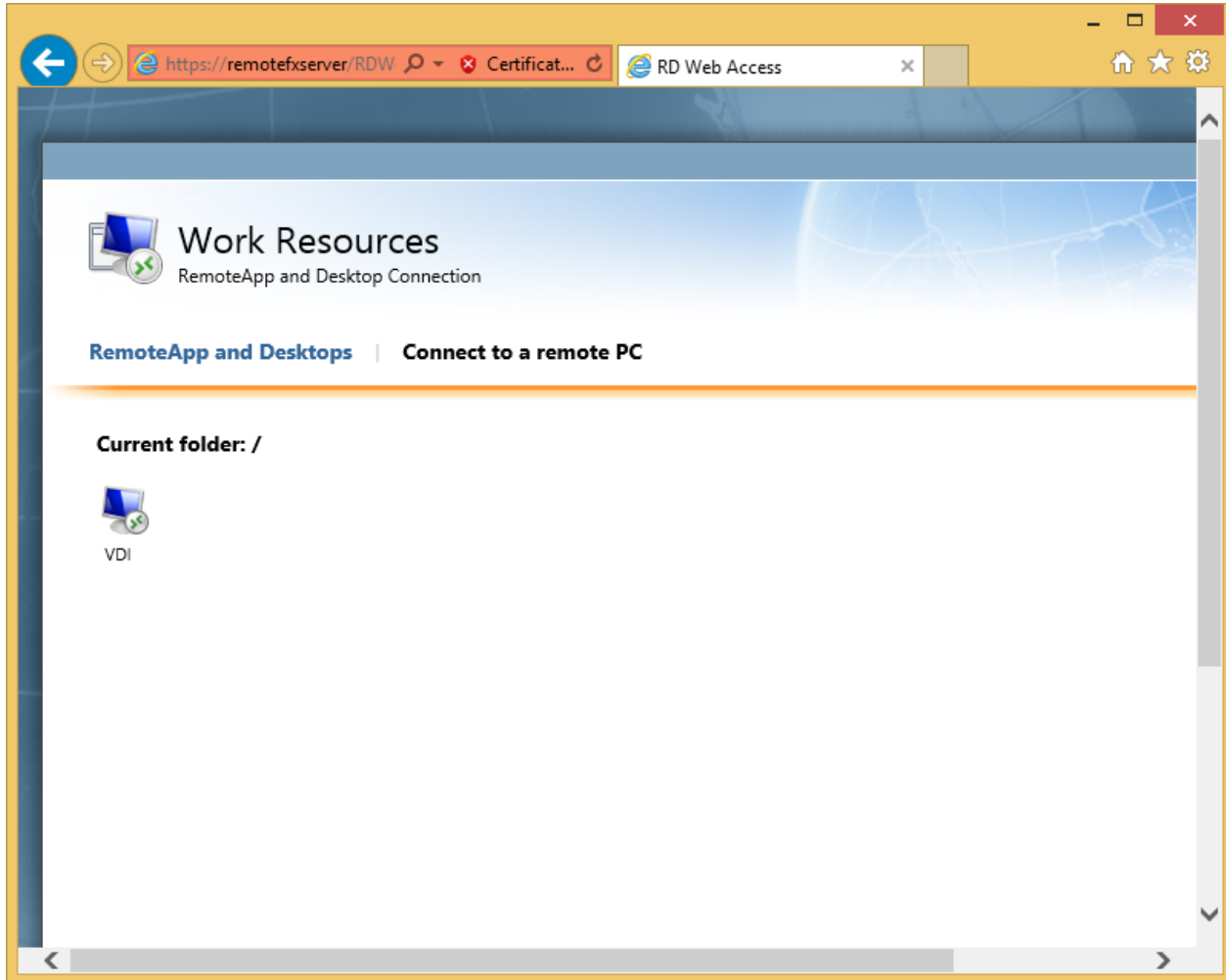


Then, click “OK”, and close the “Policy Editor”.

2. Connect to RemoteFX Server

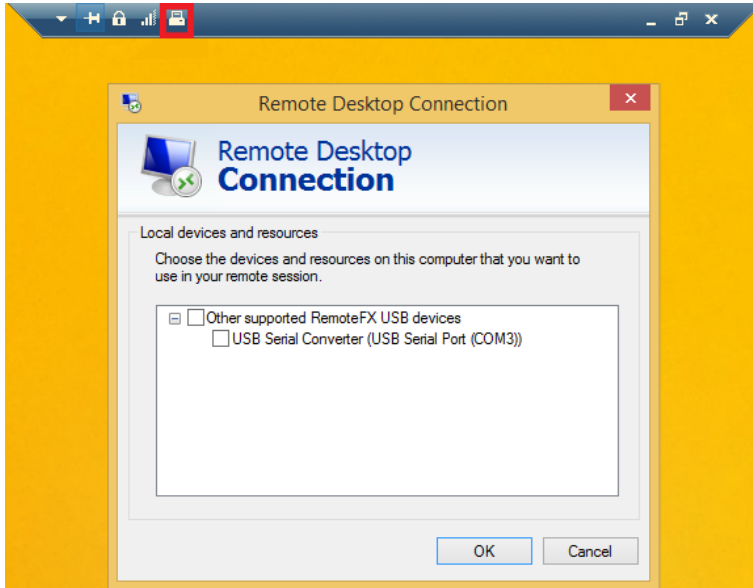
Have your IT manager provide connection information to the RemoteFX server, or use the following information as an example.

From the web browser, enter **http://xxxx/RDWeb**, (replace “xxxx” with the name of the RemoteFX server). The “VDI” folder will be displayed.

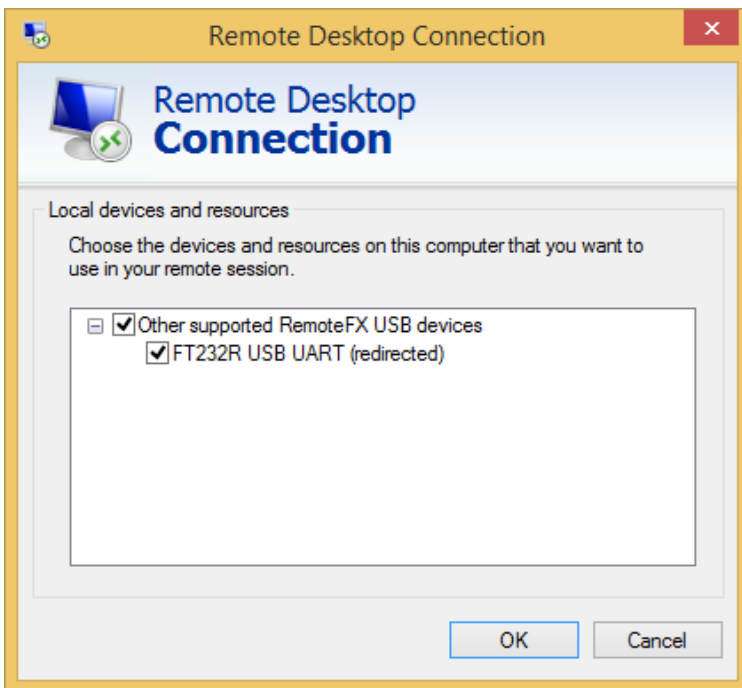


Click on the “VDI” icon; in the “Log-In” dialog, enter the user name and password to log-in to VDI.

After you have signed in, the virtual desktop will appear. In the tool bar on the top of the screen, select the “Computer” icon (see the icon highlighted in red below). A “Remote Desktop Connection” dialog will list the RemoteFX USB devices. When using a Topaz BSB signature pad in RemoteFX, the device will display as a USB serial device. Select the “USB Serial Converter” option, and then press the “OK” button.



Click the “Computer” icon again; the system will recognize the device and display it as a “FT232R USB” device. Press “OK” to continue.



Make sure you have installed the Topaz BSB driver for your Topaz BSB signature pad at: www.topazsystems.com/bsbpaddininstall.html.

Notes: The Topaz BSB driver installer may set-up the serial port different than the COM port set-up by the "RemoteFX". In this example, the "RemoteFX" was set-up as COM3 to be used by the Topaz BSB signature pad (see the first graphic on page 6). Users may also have to modify the "Windows" → "Sigplus.ini" file manually to set the field "TabletComPort" under the "Tablet" section to match with the COM port set-up by the RemoteFX. In this example, it is 3.

Sign with the Test Program – Topaz DemoOCX

Use the Topaz "DemoOCX" to capture a signature from the Topaz signature pad that is connected locally. After installing the Topaz SigPlus software from the Topaz website onto the server (see the previous "Server Side Set-Up" section), "DemoOCX" is under the "Windows" → "SigPlus" folder.



For more information on using the Topaz "DemoOCX", see the how-to PDF at: www.topazsystems.com/software/download/demoocxhowto.pdf.