



How-To Guide

Topaz Ethernet Adapter

Copyright © Topaz Systems Inc. All rights reserved.

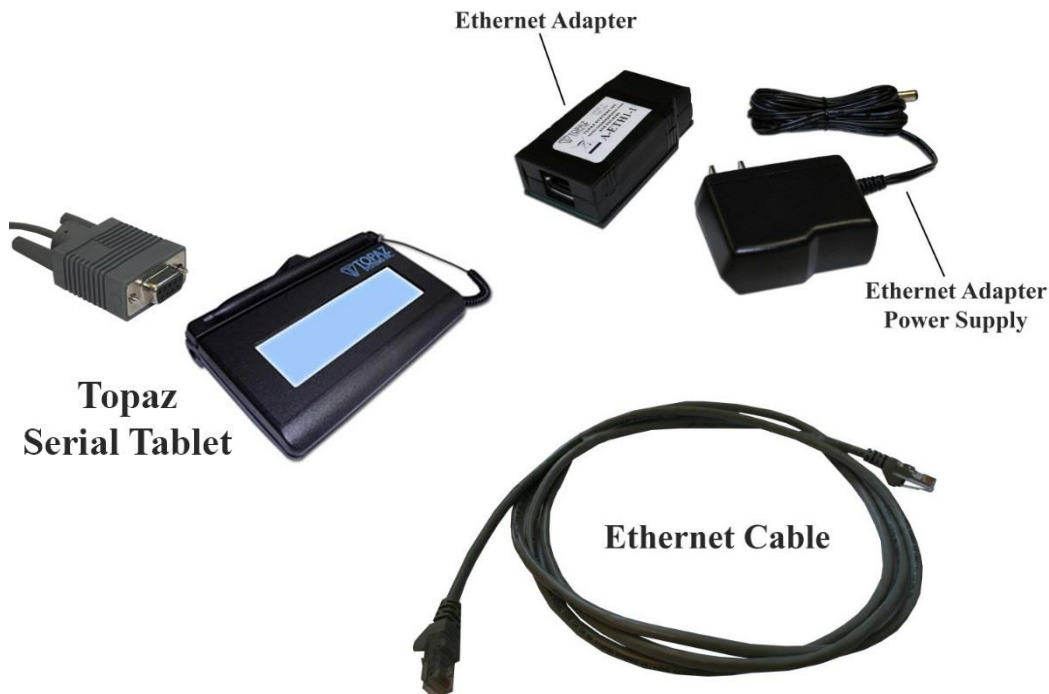
For Topaz Systems, Inc. trademarks and patents, visit www.topazsystems.com/legal.

Table of Contents

Hardware	3
Installation Steps	3
Changing SigPlus.ini	6

Hardware

Before installation of both the Digi Connect ME and [SigPlusE](#) (the SigPlus installation for both SigPlus and the DigiConnect ME converter), the ethernet adapter and tablet must first be properly connected to your Network hub. This will require a suitable ethernet cable, the Topaz ethernet adapter, a Topaz tablet with a serial connection, and the included power supply for the Ethernet adapter (see below).



Once you have all the necessary items, plug the ethernet cable (also connected to the Network hub) and Topaz tablet into the appropriate ends of the ethernet adapter.

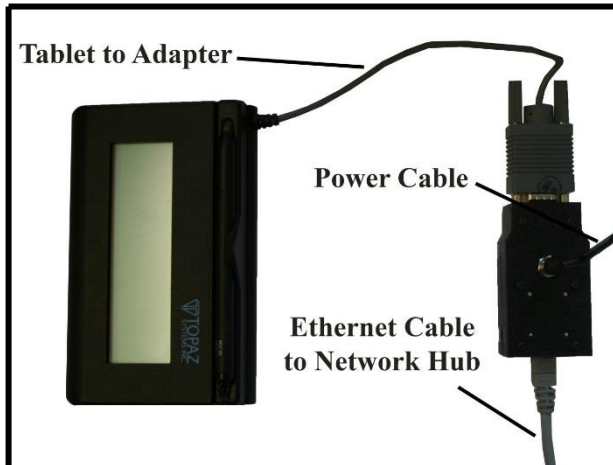
Installation Steps

Now, plug the power supply into the ethernet adapter (see description of parts below).



Once the power supply, Topaz tablet, and ethernet cable (also connected to the Network Hub) is connected, an orange light (for network connection) and blinking green light (for power) should be visible, denoting the ethernet adapter is functioning.

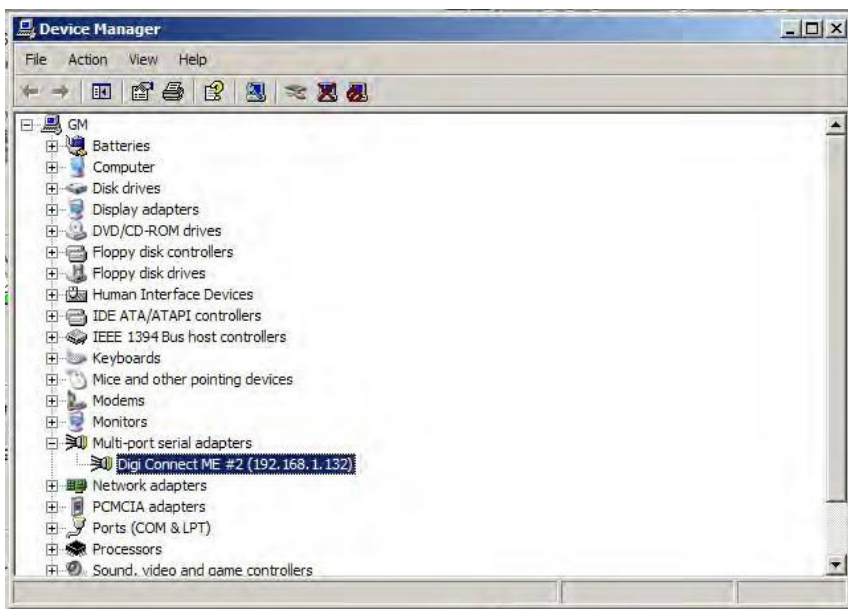
NOTE: The entire setup should look something like this:



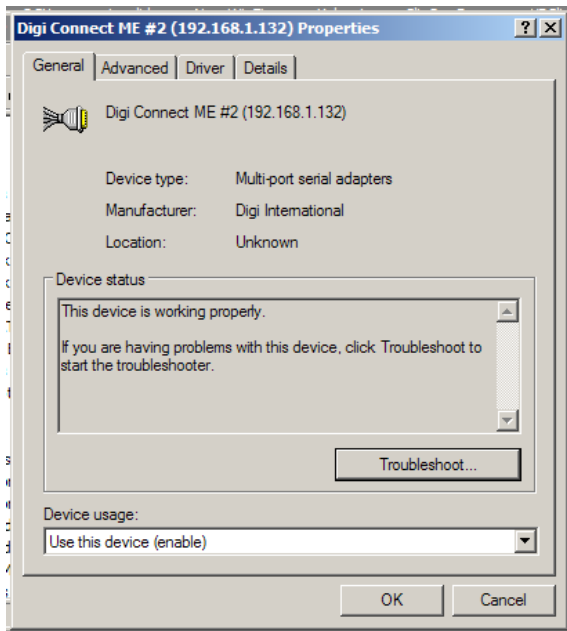
Once the adapter is properly setup, now the user can proceed with the software installation. In order for the ethernet adapter to work properly, users need to install the proper version of SigPlus, (SigPlusE). This version can be downloaded at:

<http://www.topazsystems.com/sigpluserialethernet.html>.

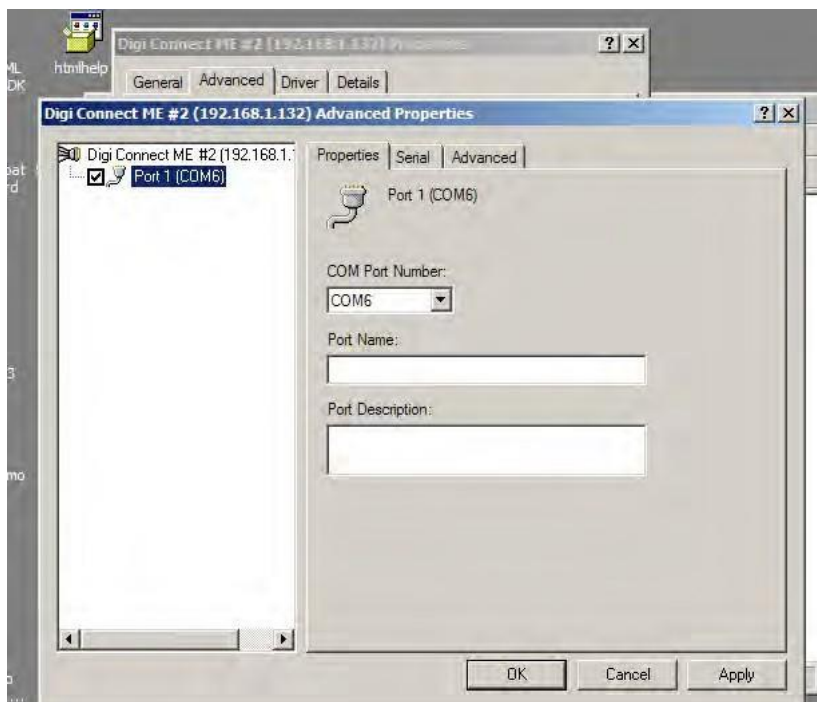
Installing “SigPlusE” will also install your ethernet adapter. In most cases, the installation process will configure the system to work. After the installation and setup procedures are finished, the user can check the status of the adapter by going into the “Device Manager”. Under the “Multi-port serial adapters” will be the “Digi Connect ME”. Highlight it and right-click, then choose “Properties”. This will open the “Properties” window.



In the “Device Status” window, it will say if the device is working properly or not. Next, click on the “Advanced” tab to open the “Advanced Properties” window.



Here, the user can see what COM Port number the Digi Connect ME has been assigned. In this case, the COM Port Number is 6. If needed, the user can change the COM port setting here.



It is important to note though that changing the COM port setting after installation will require that the SigPlus.INI file be altered either manually or through [SigPlus Adjust](#).

If, for some reason, it is necessary to change the COM Port setting, it will be necessary to make sure the SigPlus.INI file reflect these changes as well to ensure proper operation. If the COM Port setting is 1-4 (i.e. COM1, COM2, etc.), then all changes can be made through SigPlus Adjust, an easy to use tool for setting up Topaz signature tablets. If, like above, the COM Port setting is greater than 4 (i.e. COM6), it will be necessary to manually change the SigPlus.INI file.

NOTE: In most cases the SigPlus installation process will configure the tablet. Changing these settings is only necessary if a change has been made or in the rare case that configuration was unsuccessful.

Changing SigPlus.ini

The SigPlus.INI file is found in the Windows (or Win depending on Windows version) directory. When the SigPlus.INI file is opened, it will open in Notepad.

Here the necessary changes can be made. After setting TabletComPort to the correct setting, it is necessary to save the file to ensure that the changes will take place.

Once changes have been made and saved, any open applications of Topaz plug-ins will need to be closed and restarted to load the new settings.

