



# How-To Guide

## ClipGem Coordinate Return Demo

Copyright © Topaz Systems Inc. All rights reserved.

For Topaz Systems, Inc. trademarks and patents, visit [www.topazsystems.com/legal](http://www.topazsystems.com/legal).

## Overview

The ClipGem Coordinate Return Demo is perfect for the developer who is developing an application for use with a Topaz ClipGem or ClipGem Legal signature tablet. The ClipGem Coordinate Return Demo's main purpose is to provide the developer with the X and Y coordinates of any location on the ClipGem merely by tapping the pen on that location. You can also easily determine the horizontal and vertical distance between two points merely by drawing a line between them.

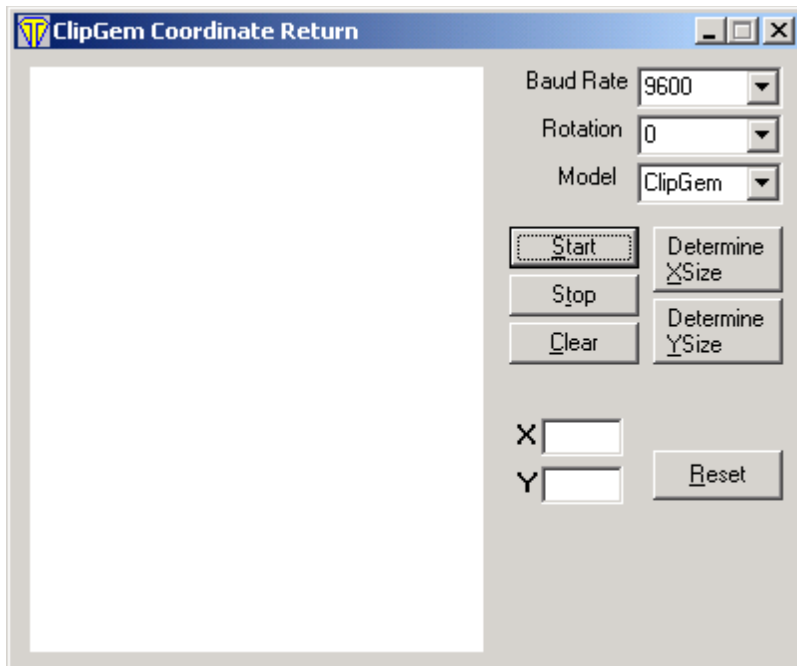


These coordinates are useful to easily obtain the arguments necessary for KeyPadAddHotSpot and SetSigWindow. Specifically these arguments are XPos, Ypos, Xsize, and Ysize.

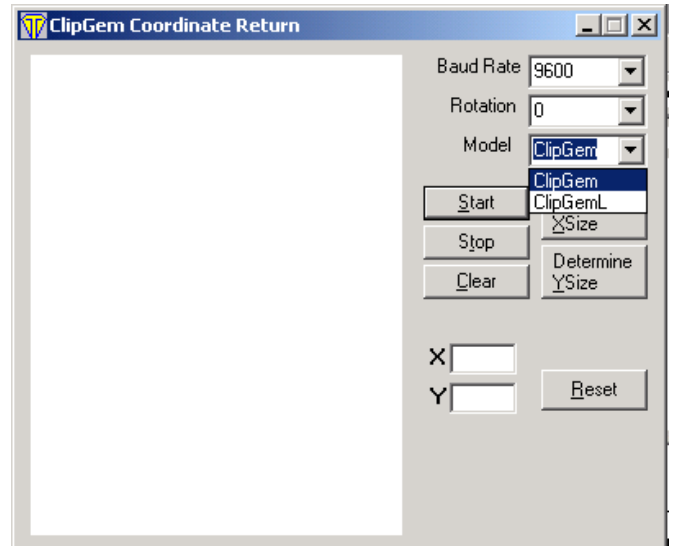
These are used to create an area on the ClipGem that starts at the X and Y pos, and extends for the X and Y size.

Download at: [www.topazsystems.com/software/ClipGemCoordinateReturnDemo.zip](http://www.topazsystems.com/software/ClipGemCoordinateReturnDemo.zip)

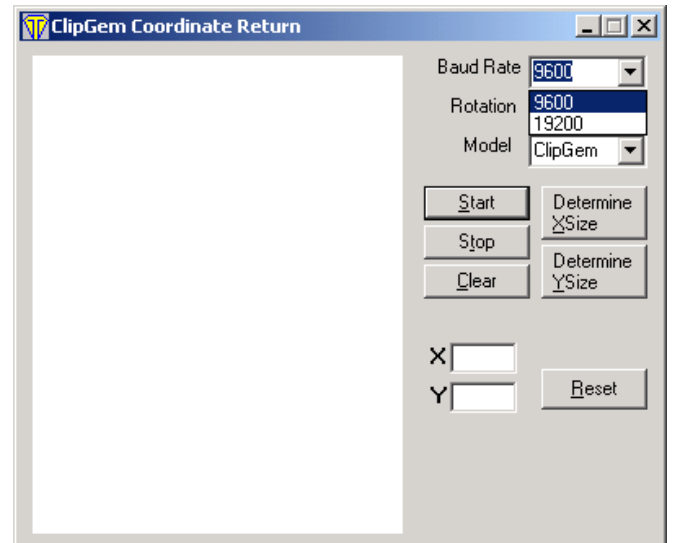
Start by opening "ClipGemCoordinateReturnDemo.exe". The window below will appear.



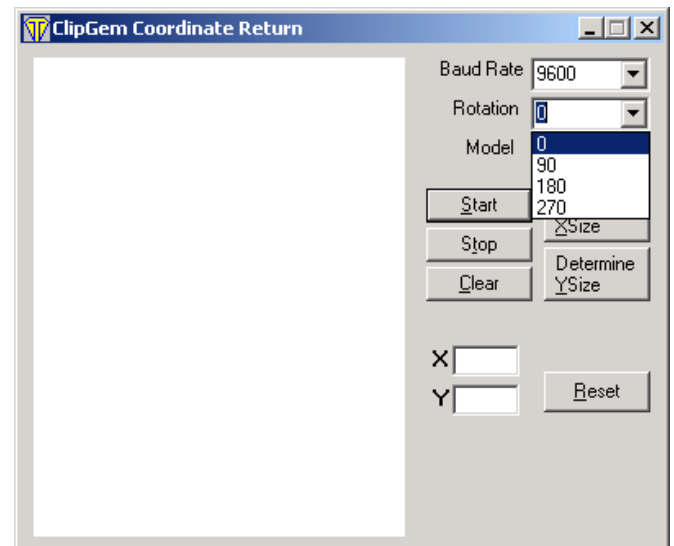
Adjust the model number to match your ClipGem. T-912 is a ClipGem, and T-916 is the ClipGemL (ClipGem Legal). You will find the model number on the back of your tablet.



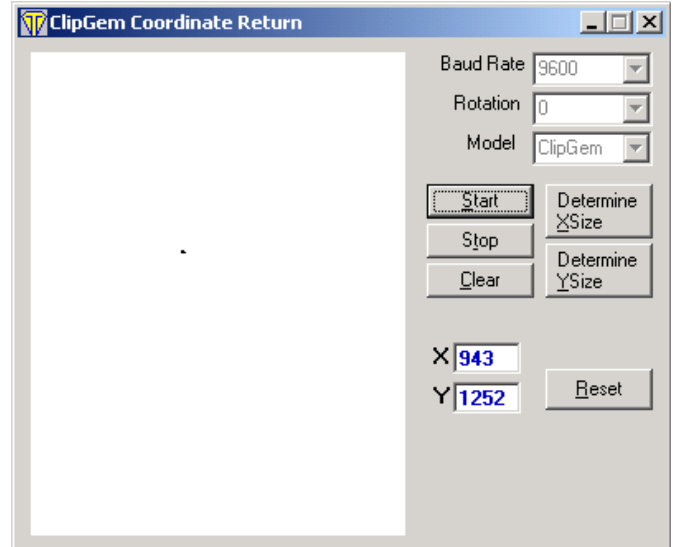
Adjust the baud rate to match the number of your ClipGem.



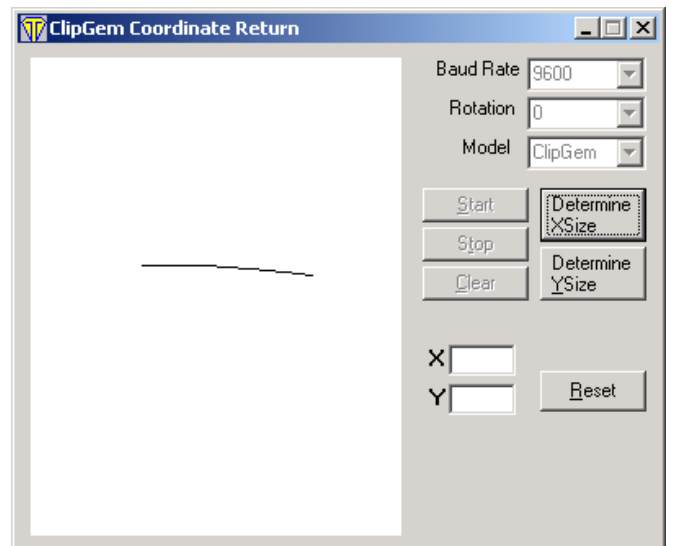
Now, change rotation of the tablet to replicate your developing needs. 0 represents a vertically held ClipGem with the clip at the top. 90 represents a horizontally held ClipGem with the clip on the right, and so on.



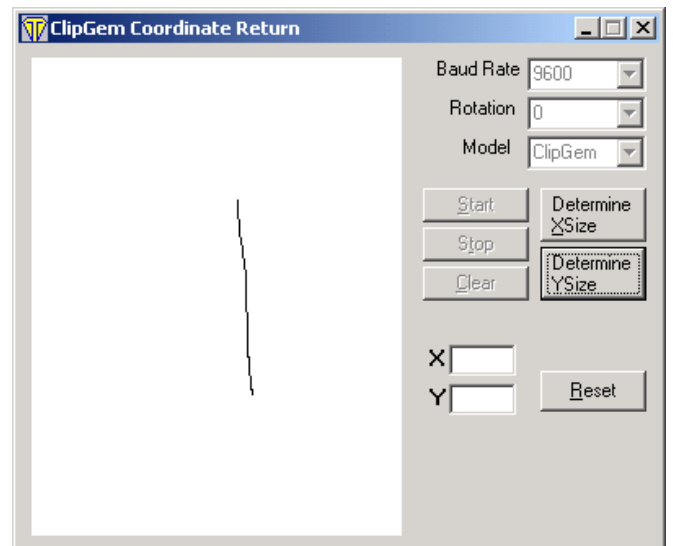
Click “Start” and push the tip of the pen down on any point of the ClipGem pad. The X and Y coordinates of that contact point will be displayed in text boxes as shown below.



In order to tell the horizontal distance between two points on your ClipGem, click “Determine X Size.” Then, draw a line between the points. A screen will appear telling you the exact horizontal distance between the two points.



In order to tell the vertical distance between two points on your ClipGem, click “Determine Y Size.” Then draw a line between the points. It doesn’t matter if you draw top-to-bottom or bottom-to-top. A screen will appear telling you the exact vertical distance between the two points.



To change any settings after pressing “Start”, press “Stop”. You can also click the “Reset” button to restart the demo with default settings. When you are ready to use the ClipGem Coordinate Demo again, press “Start.”