



# User Installation Guide

## Topaz SigPlusExtLite

Designed for use in Chrome, Firefox, and Edge  
Browser Extension frameworks.

**Version 3.0**

Copyright © 2023 Topaz Systems Inc. All rights reserved.

For Topaz Systems, Inc. trademarks and patents, visit [www.topazsystems.com/legal](http://www.topazsystems.com/legal).

## Table of Contents

<b>1.0 – Introduction.....</b>	<b>3</b>
<b>2.0 – Browsers and Operating Systems Supported.....</b>	<b>3</b>
<b>3.0 – Installation Steps .....</b>	<b>3</b>
3.1 – Install SigPlus.....	3
3.2 – Install SigPlusExtLite .....	3
3.3 – Installing Topaz SigPlusExtLite Browser Extensions.....	4
3.3.1 – <i>Google Chrome</i> .....	4
3.3.2 – <i>Mozilla Firefox</i> .....	5
3.3.3 – <i>Microsoft Edge</i> .....	6
3.4 – Run the Sample Web Page .....	7

## 1.0 – Introduction

With Topaz SigPlusExtLite software tools integrated into a webpage, you can capture handwritten signatures in Google Chrome, Microsoft Edge, and Mozilla Firefox browsers using Topaz Signature Pads and GemView Tablet Displays. This document provides instructions on installing Topaz SigPlusExtLite.

## 2.0 – Browsers and Operating Systems Supported

Topaz SigPlusExtLite supports Google Chrome 77, Mozilla Firefox 68, Microsoft Edge 80 browser or newer, as installed on Windows 10 and later, 32-bit and 64-bit operating systems.

**Note:** .NET Framework 4.7.1 or higher should be available on the end user's computer.

## 3.0 – Installation Steps

**Note: Before installing SigPlusExtLite be sure to uninstall any previous versions of SigPlusExtLite.**

### 3.1 – Install SigPlus

SigPlusExtLite supports Topaz SigPlus ActiveX version 4.4.0.24 or greater for signature pads and SigPlus ActiveX version 4.4.101.1 or greater for GemView. If already installed, re-installation of SigPlus should not be needed. Visit the SigPlus page on the Topaz website for more information: [www.topazsystems.com/sdks/sigpluspro-activex.html](http://www.topazsystems.com/sdks/sigpluspro-activex.html).

### 3.2 – Install SigPlusExtLite

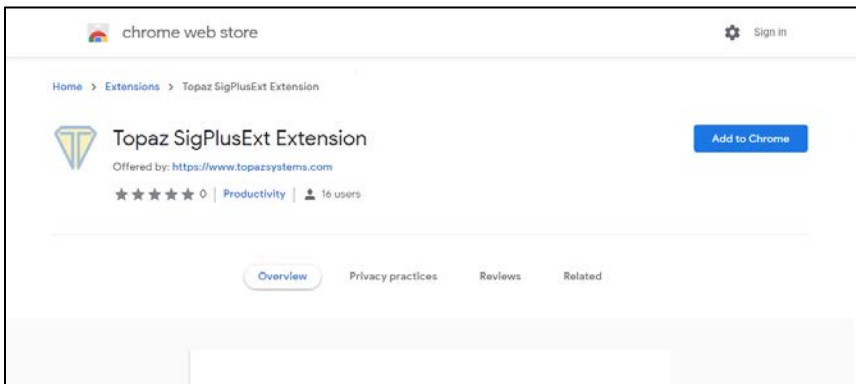
1. Download and save Topaz SigPlusExtLite installer from the following URL:  
[www.topazsystems.com/software/SigPlusExtLite\\_V3.exe](http://www.topazsystems.com/software/SigPlusExtLite_V3.exe).
2. Right-click on the “SigPlusExtLite.exe” installer and choose “Run as Administrator”. Then, follow the steps in the setup wizard.
3. **Continue below if you are using a GemView Tablet Display. If not, continue with section 3.3.**
  - Install the GemView drivers from the following URL:  
[www.topazsystems.com/software/download/gemview.exe](http://www.topazsystems.com/software/download/gemview.exe).
  - Right-click on the “gemview.exe” installer and choose “Run as Administrator”. Then, follow the steps in the setup wizard.

- **Please note:** For most GemView users, “DisplayLink Drivers are included in Windows by default. If unavailable you can download directly from the following URL: [www.topazsystems.com/software/download/displaylink.exe](http://www.topazsystems.com/software/download/displaylink.exe). After downloading, right-click on the “displaylink.exe” installer, and choose “Run as Administrator”. Then, follow the steps in the setup wizard.

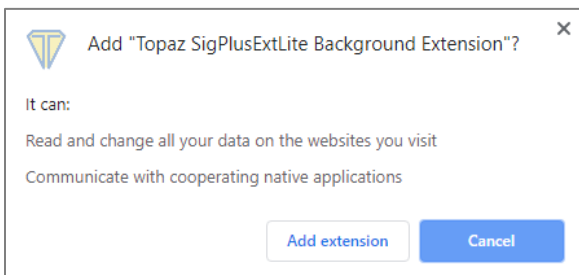
### 3.3 – Installing Topaz SigPlusExtLite Browser Extensions

#### 3.3.1 – Google Chrome

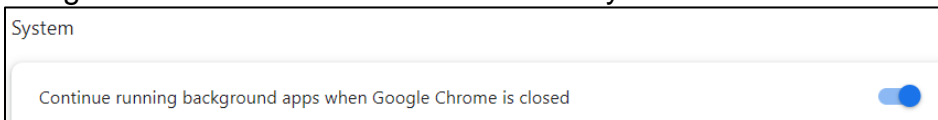
1. Start the Chrome Browser. Go to the Topaz “SigPlusExtLite” Background Extension page by navigating to, or copy and pasting the URL below into the Browser: <https://chrome.google.com/webstore/detail/topaz-sigplusextlite-back/dhcpobccjkdnmibckqpejmbpmpembqco>
2. Click the “Add to Chrome” button displayed on the top right of the page that is displayed (see the screenshot below).



3. Click on the “Add extension” button in the confirmation dialog that is displayed.



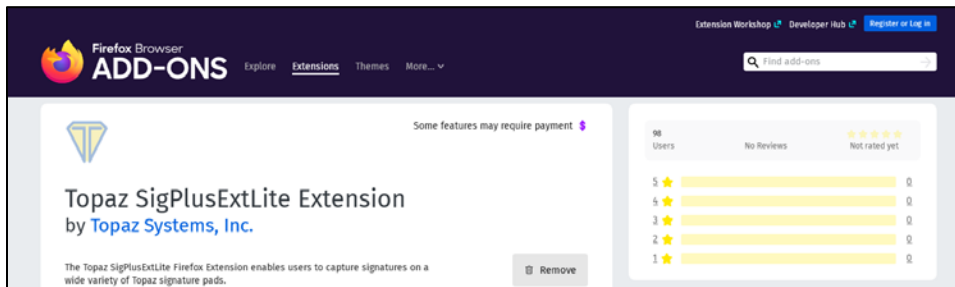
4. Go to `chrome://settings/system` and enable “Continue running background apps when Google Chrome is closed” if it is not already enabled.



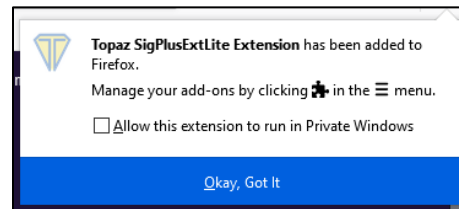
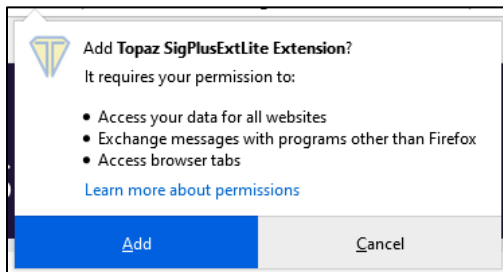
## 3.3.2 – Mozilla Firefox

Before installing the Firefox extension, it is advised to remove any previous version of the Topaz SigPlusExtLite extension from the Firefox Add-ons manager page, Extension section. After removing the older version, follow these steps to install the new extension:

1. Go to the Topaz “SigPlusExtLite” Background Extension page by navigating to, or copy and pasting the URL below into the Browser:  
<https://addons.mozilla.org/en-US/firefox/addon/topaz-sigplusextlite-extension/>



2. In the window that appears, click add to install the addon: Click “Okay, Got it” to complete the install.



**Note:**

- *Step 2 has to be performed for all the Windows login accounts by logging into Windows and starting the Firefox browser.*

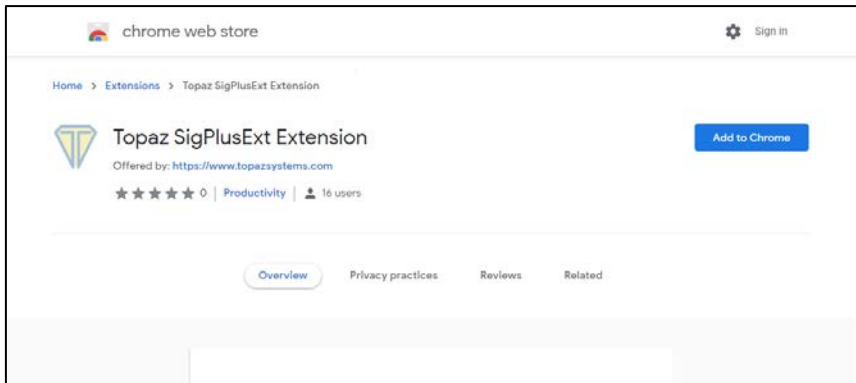
### 3.3.3 – Microsoft Edge

1. Start the Microsoft Edge Browser.

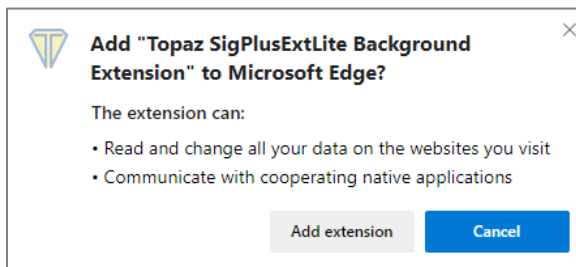
Go to the Topaz “SigPlusExtLite” Background Extension page by navigating to, or copy and pasting the URL below into the Browser:

<https://chrome.google.com/webstore/detail/topaz-sigplusextlite-back/dhcpobccjkdnmibckgpejmbpmpembqco>

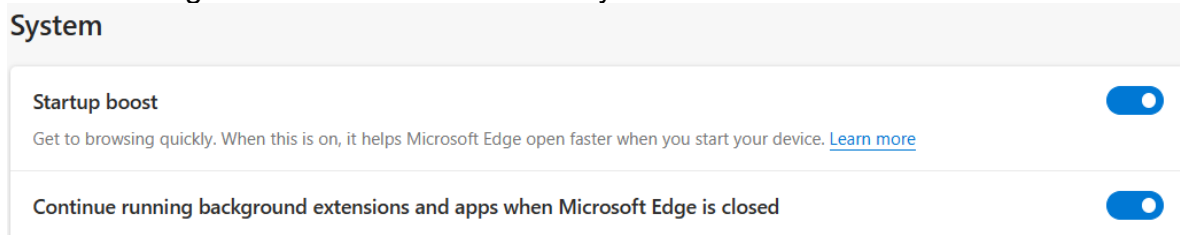
2. A window showing the Chrome Extension will be displayed. Click the “Add to Chrome” button displayed on the top right of the page (see the screenshot below).



3. Click on the “Add extension” button in the confirmation dialog that is displayed.



4. Go to `edge://settings/system` “Continue running background extensions and apps when Microsoft Edge is closed” if it is not already enabled.



### 3.4 – Run the Sample Web Page

After the SigPlusExtLite software and Extensions are installed and the Topaz Signature Pad or the GemView Device is connected to the client PC, launch Google Chrome, Mozilla Firefox, Opera or Microsoft Edge (Chromium) browser and navigate to the following pages for testing purposes:

- Sample 1 (For GemView Devices & Topaz Signature Pads):  
[https://sigplusweb.com/sign\\_chrome\\_ff\\_sigplusextlite.html](https://sigplusweb.com/sign_chrome_ff_sigplusextlite.html)
- Sample 2 (For GemView Devices):  
[https://www.sigplusweb.com/SigPlusExtLite\\_Demo/sample1/SigPlusExtLiteDemo.html](https://www.sigplusweb.com/SigPlusExtLite_Demo/sample1/SigPlusExtLiteDemo.html)

Click the “Sign” button, and the signing window will appear as shown. Sign on your signature pad. To accept the signature, click the green checkmark icon. To clear the signing window and re-sign, click the blue clear icon. To cancel, click the red cancel icon.

